

U.S. Army Public Health Center

# Army Influenza Activity Report

Week ending 2 November 2019 (week 44)

## Influenza Vaccination Coverage\*

As of 05 November 2019

N/A	DoD
28%	Army Active Duty
28%	Army Guard
41%	Army Reserve

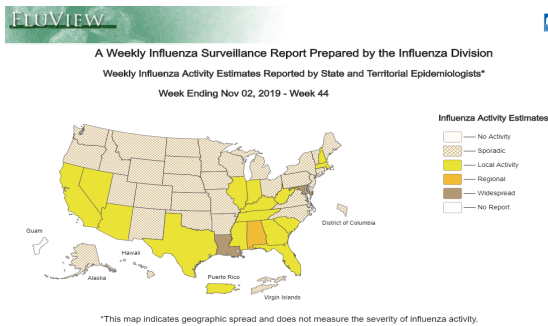
\*Data Source: MEDPROS, ASIMS, MRRS

## SUMMARY

Flu activity is currently low in the Army population. The proportion of positive influenza A specimens for the Army in week 44 is 1.8%, which is lower than the historical average of 3.4% for the same time. All regional health commands (RHC), with the exception of RHC-Central, had a percent positive rate lower than their respective historical average. RHC-Central had percent positive rate of 2.2% while its historical average was 2.0%. Two hospitalizations were reported in week 44 bringing the season total to four. The majority of positive specimens were in younger populations; those under 18 years of age accounted for 80% overall of positive respiratory illness specimens in week 44. In Active Duty Soldiers, 18 to 29 year-olds accounted for 85% of positive specimens. Influenza B was the most common type of positive specimen accounting for 64.4%.

## GEOGRAPHIC SPREAD

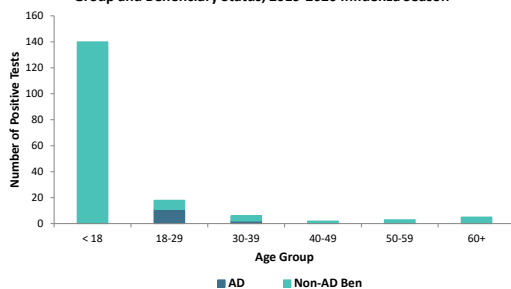
Click to enlarge image



In week 44, widespread influenza activity was reported in Louisiana and Maryland; regional activity was reported in Alabama; local activity was reported in 15 states. Sporadic activity was reported in the District of Columbia, U.S. Virgin Islands, and 31 states. Rhode Island reported no activity, and Guam did not report.

## DEMOGRAPHICS

Positive Respiratory Specimen Results from Army MTFs by Age Group and Beneficiary Status, 2019-2020 Influenza Season

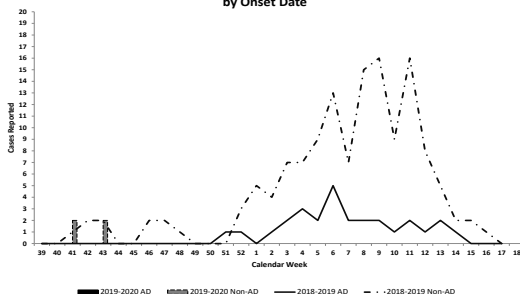


**AD:** A total of 13 positive respiratory specimens were collected from Active Duty (AD) Soldiers in week 44; 85% (n=11) were from Soldiers 18 to 29 years of age; 15% (n=2) were from soldier 30 to 39 years of age.

**Non-AD:** A total of 161 positive respiratory specimens were collected from non-AD individuals; 87% (n=140) were from those under 18 years of age.

## INFLUENZA-ASSOCIATED HOSPITALIZATIONS

Army Influenza-Associated Hospitalizations Reported in DRSi by Onset Date



In week 44, there were two hospitalizations reported to DRSi and four hospitalizations in total reported for the entire season thus far. During the 2018-2019 season, no hospitalizations were reported in week 44, and five hospitalizations had been reported since the start of the season to week 44.

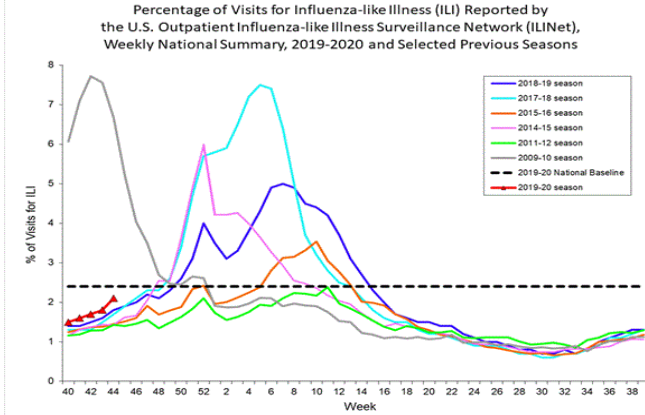
\*DRSi does not capture cases older than 65 years old for influenza-associated hospitalizations.

**Additional Resources:** [Army Influenza Reports](#); [ARD Reports](#); [AFHSC Influenza Reports](#); [NHRC FRI Reports](#); [DoD Pandemic Influenza Watchboard](#); [CDC](#)

**Key:** ILI-Influenza-Like Illness; DRSi- Disease Reporting System Internet; NHRC- Naval Health Research Center; ADV-Adenovirus; RSV-Respiratory Syncytial Virus; DED- Disease Epidemiology Division; SM-Service Member

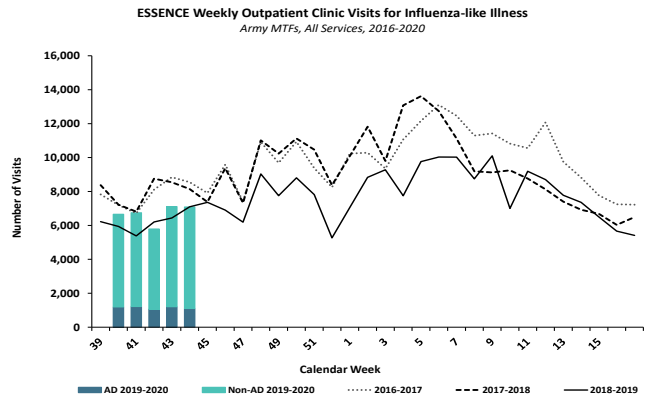
**Questions?**  
[Email APHC DEP](#)  
410-436-7605

## ILI ACTIVITY - UNITED STATES

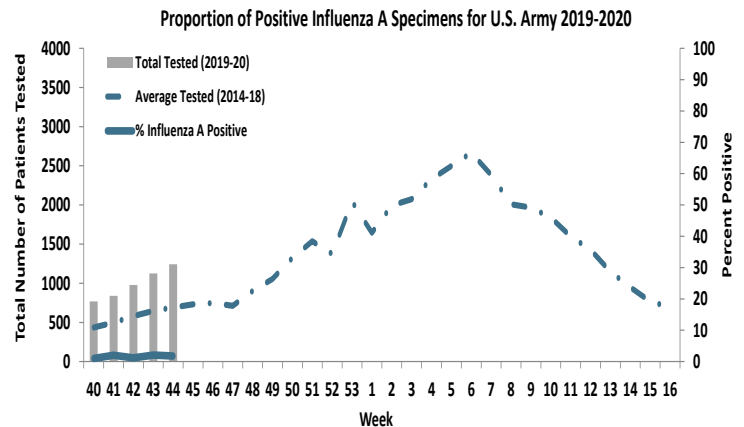
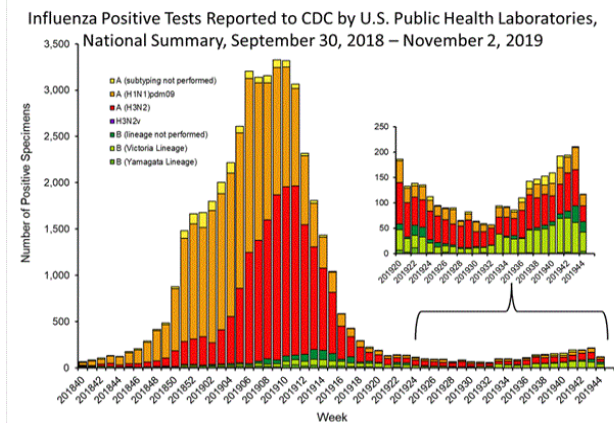


Nationwide in week 44, incident ILI activity was 2.1%; this is below the national baseline of 2.4%. Regionally, the percentage of ILI outpatient visits reported to the CDC ranged from 1.2% to 3.8%. At Army medical treatment facilities, incident ILI activity decreased marginally from week 43 to week 44 by 0.04%. The majority of ILI encounters (85%) were from non-AD patients in week 44.

## ILI ACTIVITY - ARMY



## LABORATORY RESPIRATORY SPECIMEN TESTING



Nationwide, 766 specimens were tested and submitted to CDC, of which 117 (15%) were positive. Influenza A accounted for 46% of the total positive specimens submitted to the CDC in week 44. In the Army population, 1.8% of 1,242 specimens tested for influenza A were positive. Seventeen (77%) of the positive influenza A specimens were from non-Active Duty individuals. RHC-C reported the majority (72%, n=16) of positive influenza A specimens.

		Week 41	Week 42	Week 43	Week 44	Season Total
Test Types Among Positive Influenza A Specimens	RAT	15	8	16	16	61
	Culture	0	2	3	0	6
	PCR	2	2	5	6	16
Army MTF Laboratory Results, 2019-20	Influenza A	17	12	24	22	83
	Influenza B	15	22	19	112	172
	Adenovirus	2	9	7	3	31
	Enterovirus	3	1	0	0	4
	Parainfluenza	8	18	13	1	51
	RSV	24	33	34	36	133
	Negative	1789	2330	2398	2592	10890
	<b>Total</b>	<b>1858</b>	<b>2425</b>	<b>2495</b>	<b>2766</b>	<b>11364</b>

Of the 2,766 specimens tested in week 44, 6.3% (n=174) were positive for any type of respiratory illness, which represents a 79% increase from the 97 positive specimens in week 43. The most common type of positive specimen in week 44 was influenza B, which accounted for 64.4% (n=112) of positive specimens. Moreover, the number of positive influenza B specimens was nearly 4.9 times higher in week 44 compared to week 43. RSV was the second most common positive specimen in week 44, accounting for 20.7%; this was followed by influenza A (12.6%), adenovirus (1.7%), and parainfluenza (0.6%).

**Locations providing week 44 laboratory data as of 6 November 2019:** Ft Benning, Ft Bliss, Ft Bragg, Ft Campbell, Ft Carson, Ft Gordon, Ft Hood, Ft Huachuca, Ft Irwin, Ft Jackson, Ft Knox, Ft Leavenworth, Ft Lee, Ft Leonard Wood, Ft Polk, Ft Riley, Ft Rucker, Ft Sam Houston, Ft Sill, Ft Stewart, Ft. Wainwright, Korea, Landstuhl, Tripler, and Walter Reed.

\*NOTE: Madigan AMC data was not received due to the switch from AHLTA/CHCS to MHS Genesis

## LABORATORY RESPIRATORY SPECIMEN TESTING

Region	Installation	Influenza A			Influenza B			Adenovirus		
		No. Tested	% Positive	Baseline % Positive	No. Tested	% Positive	Baseline % Positive	No. Tested	% Positive	Baseline % Positive
RHCA	Ft. Belvoir	2	0	1.4			0			9.8
	Ft. Benning	121	0	1.9	121	1.7	1.9			
	Ft. Bragg	55	0	0						
	Ft. Campbell	80	0	0	80	1.3	0			100
	Ft. Drum	7	0	11.1						
	Ft. Eustis	15	13.3	7.1			100			
	Ft. Gordon	50	2	2.2	50	4	0			100
	Ft. Jackson	30	3.3	5.7	30	0	2.9			
	Ft. Knox	13	0	11.1	13	7.7	0			
	Ft. Lee	7	0	5.3						
	Ft. Meade			0						
	Ft. Rucker	14	0	0	14	7.1	0			
	Ft. Sam Houston	203	2	0.7	203	2.5	1.5			100
	Ft. Stewart	42	0	0	42	4.8	0			
	Redstone Arsenal	4	0	0	4	0	0			
West Point Military Academy	10	0	0							
RHCC	Ft. Bliss	142	0	0	134	0	0	18	16.7	7.7
	Ft. Carson	38	18.4	0						
	Ft. Hood	304	0	1	305	31.5	1.9	1	0	10
	Ft. Huachuca	7	0	0	7	0	0			
	Ft. Irwin	16	0	11.5	16	0	0			
	Ft. Leavenworth	7	14.3	11.5	7	0	15.4			
	Ft. Leonard Wood	19	10.5	0	19	0	0			
	Ft. Polk	26	0	5.6	1	100	100			
	Ft. Riley	60	3.3	0	60	0	0			
Ft. Sill	24	0	6.7			100				
RHCE	Landstuhl Regional Medical	9	0	7.9	9	0	0	9	0	0
RHCP	Ft. Wainwright	17	11.8	11.1	17	0	0			
	Korea	14	0	0	1	0	0	1	0	5.3
	Tripler Army Medical Center	51	0	0	34	2.9	0	33	0	9.7

Region	Installation	Enterovirus			Parainfluenza			RSV		
		No. Tested	% Positive	Baseline % Pos.	No. Tested	% Positive	Baseline % Pos.	No. Tested	% Positive	Baseline % Pos.
RHCA	Ft. Belvoir						21.3			10.6
	Ft. Campbell						100			100
	Ft. Drum			100			100			0
	Ft. Gordon						100			100
	Ft. Sam Houston						100			100
	Ft. Stewart						100	15	26.7	36.8
	West Point Military Academy						100			
RHCC	Ft. Bliss							134	0.7	11.1
	Ft. Carson							10	10	0
	Ft. Hood						16.7	78	24.4	28.3
	Ft. Leavenworth							1	0	0
	Ft. Leonard Wood						100			
	Ft. Polk							8	50	33.3
	Ft. Riley							24	16.7	6.7
Ft. Sill									0	
RHCE	Landstuhl Regional Medical Center				10	10	9.4	10	0	0
RHCP	Ft. Wainwright							14	0	7.7
	Korea			0	1	0	0	1	0	5.3
	Tripler Army Medical Center	33	0	0	33	0	12.5	3	100	100

No.: Number of specimens tested during MMWR week 44 2019.

% Pos.: Percentage of positive specimens reported during MMWR week 44, 2019.

Baseline % Pos.: Percentage of positive specimens reported in MMWR week 1 during influenza seasons from September 2012 - May 2018.

Missing values indicate that specimens were not tested for the disease during the week of interest.

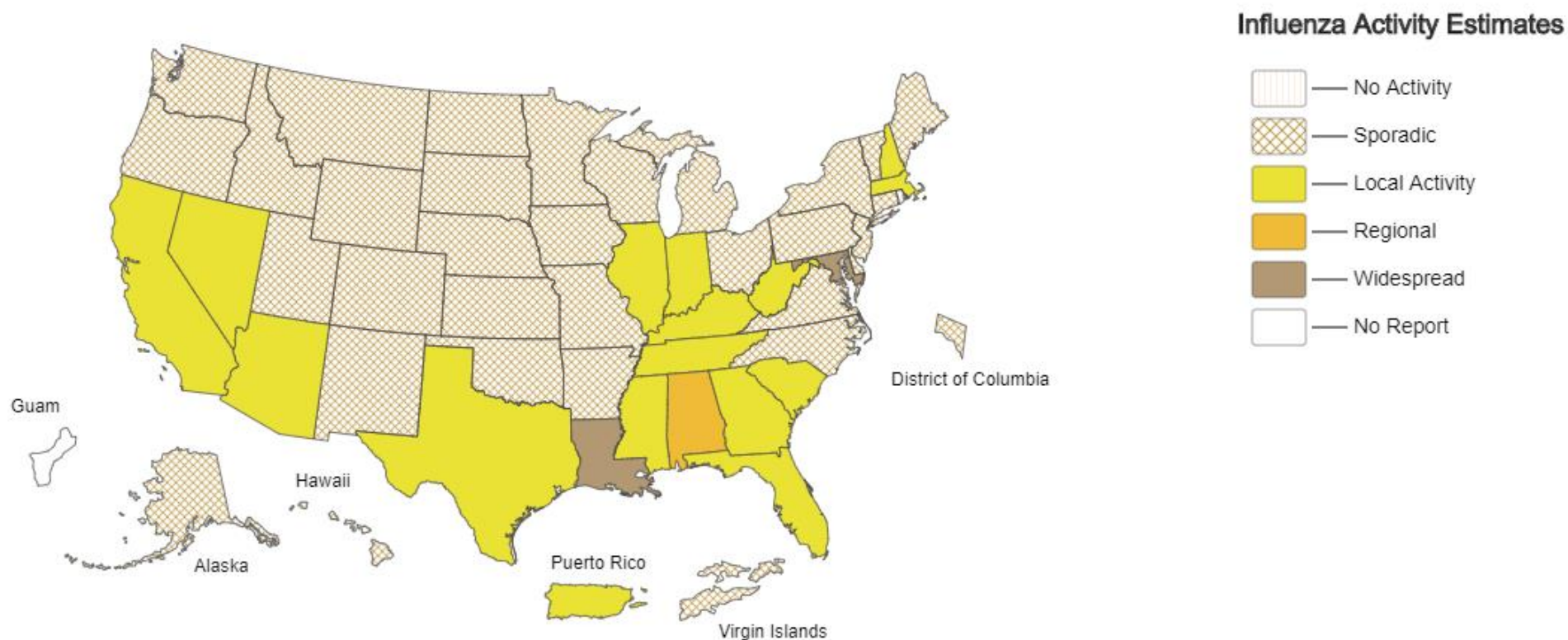




## A Weekly Influenza Surveillance Report Prepared by the Influenza Division

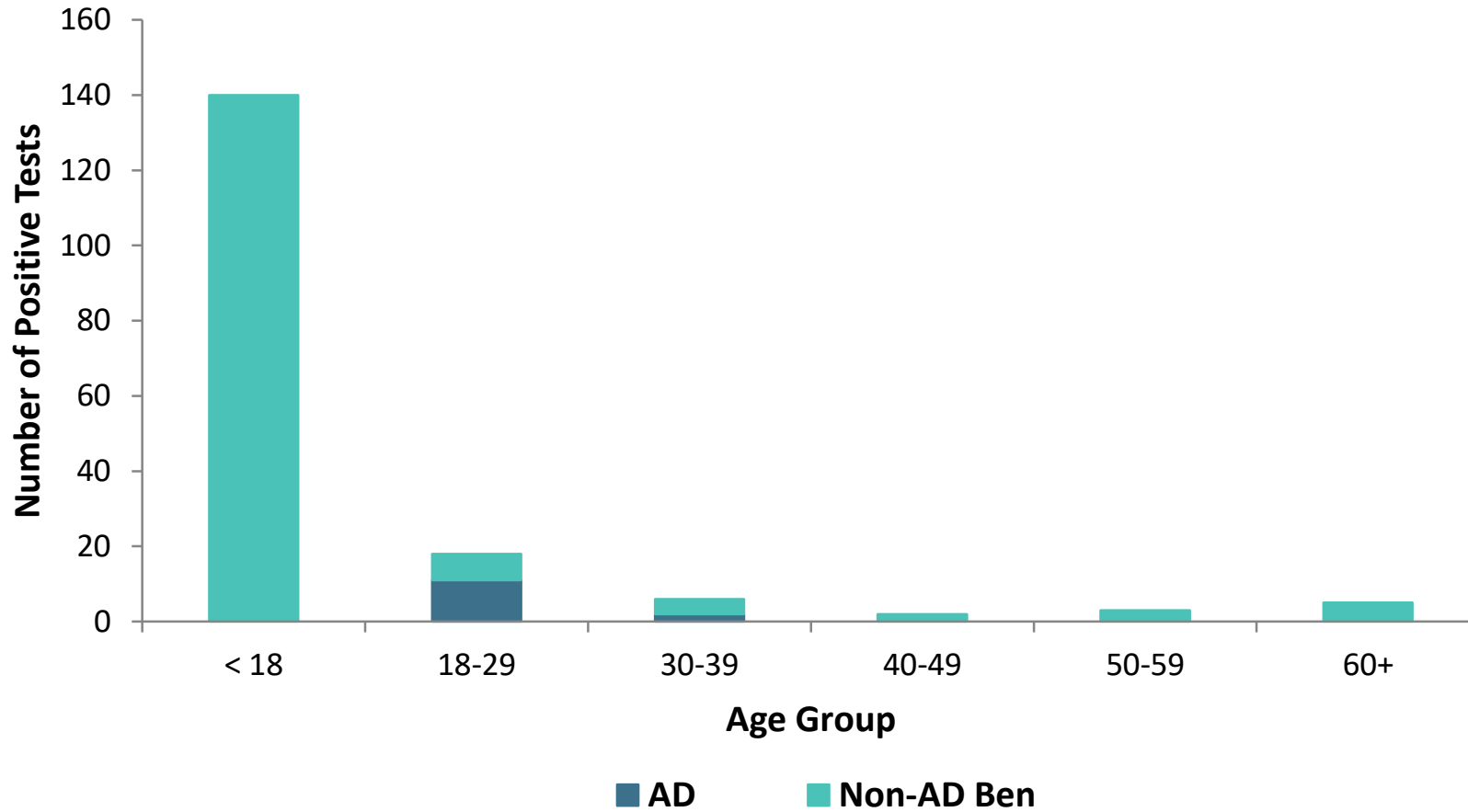
Weekly Influenza Activity Estimates Reported by State and Territorial Epidemiologists\*

Week Ending Nov 02, 2019 - Week 44



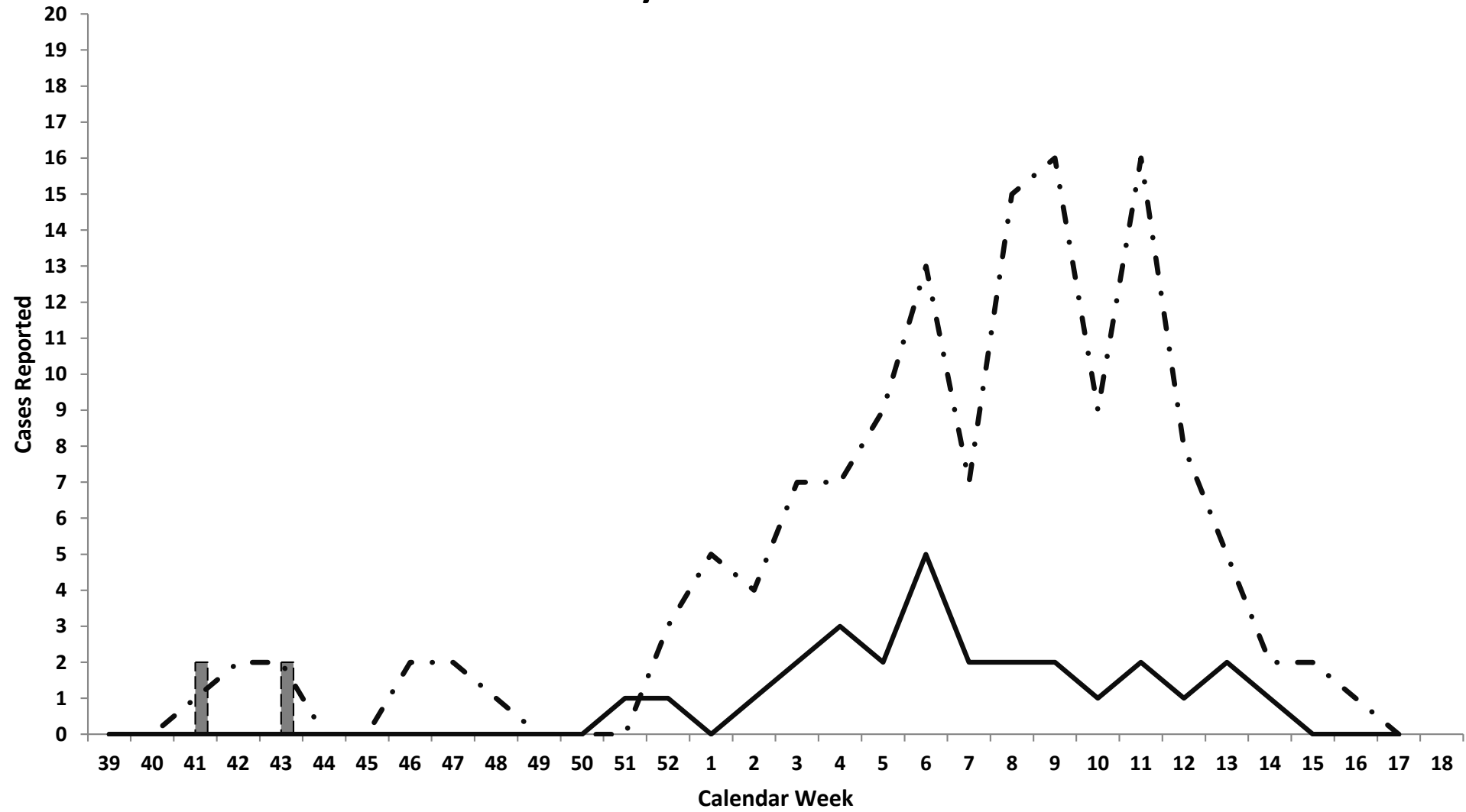
\*This map indicates geographic spread and does not measure the severity of influenza activity.

**Positive Respiratory Specimen Results from Army MTFs by Age Group and Beneficiary Status, 2019-2020 Influenza Season**



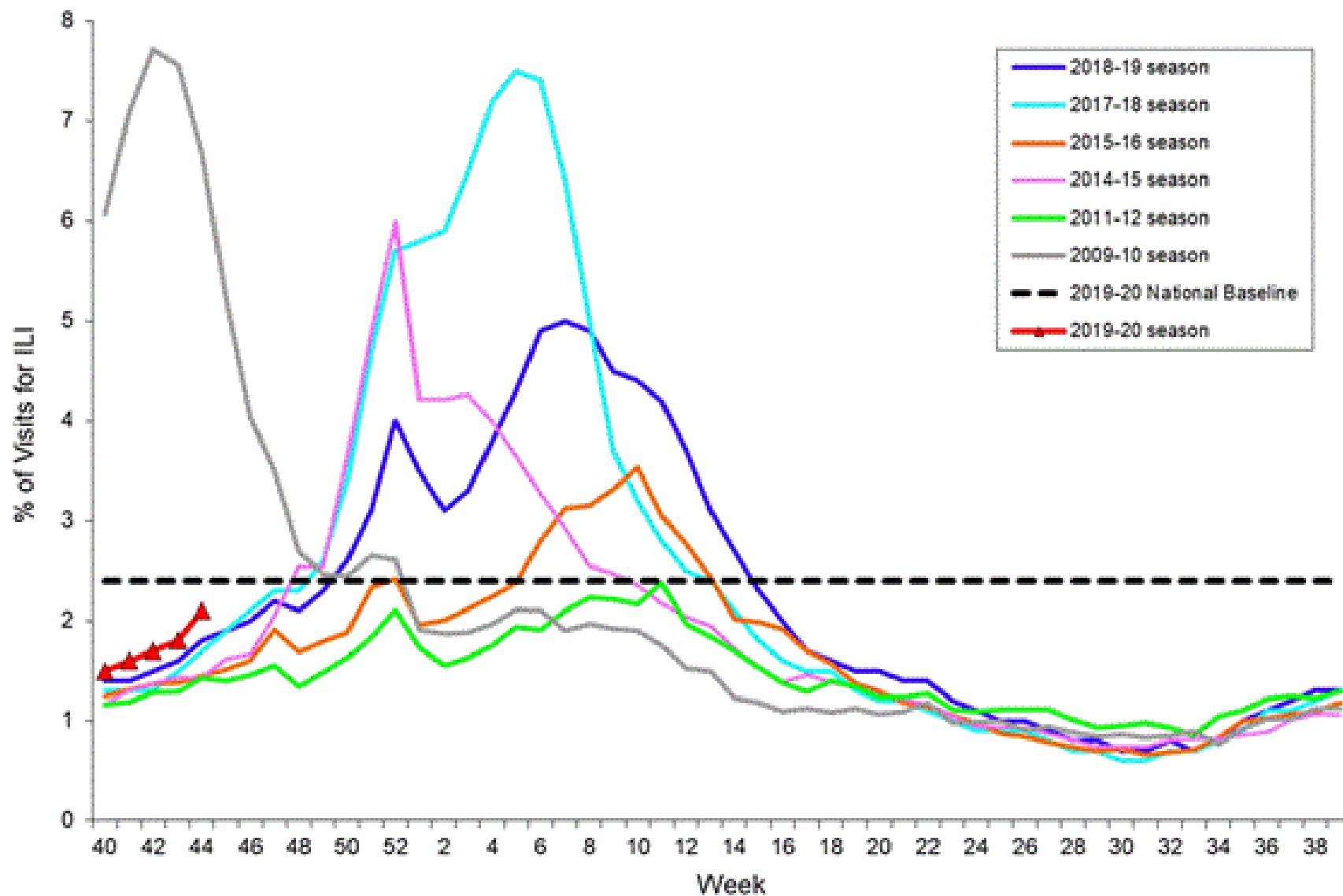
<b>Week 44</b>			
<b>Age Group</b>	<b>AD</b>	<b>Non-AD Ben</b>	<b>Season Total</b>
< 18	0	140	<b>365</b>
18-29	11	7	<b>61</b>
30-39	2	4	<b>23</b>
40-49	0	2	<b>5</b>
50-59	0	3	<b>6</b>
60+	0	5	<b>14</b>
<b>Total</b>	<b>13</b>	<b>161</b>	<b>474</b>

# Army Influenza-Associated Hospitalizations Reported in DRSi by Onset Date



2019-2020 AD    
  2019-2020 Non-AD    
  2018-2019 AD    
  2018-2019 Non-AD

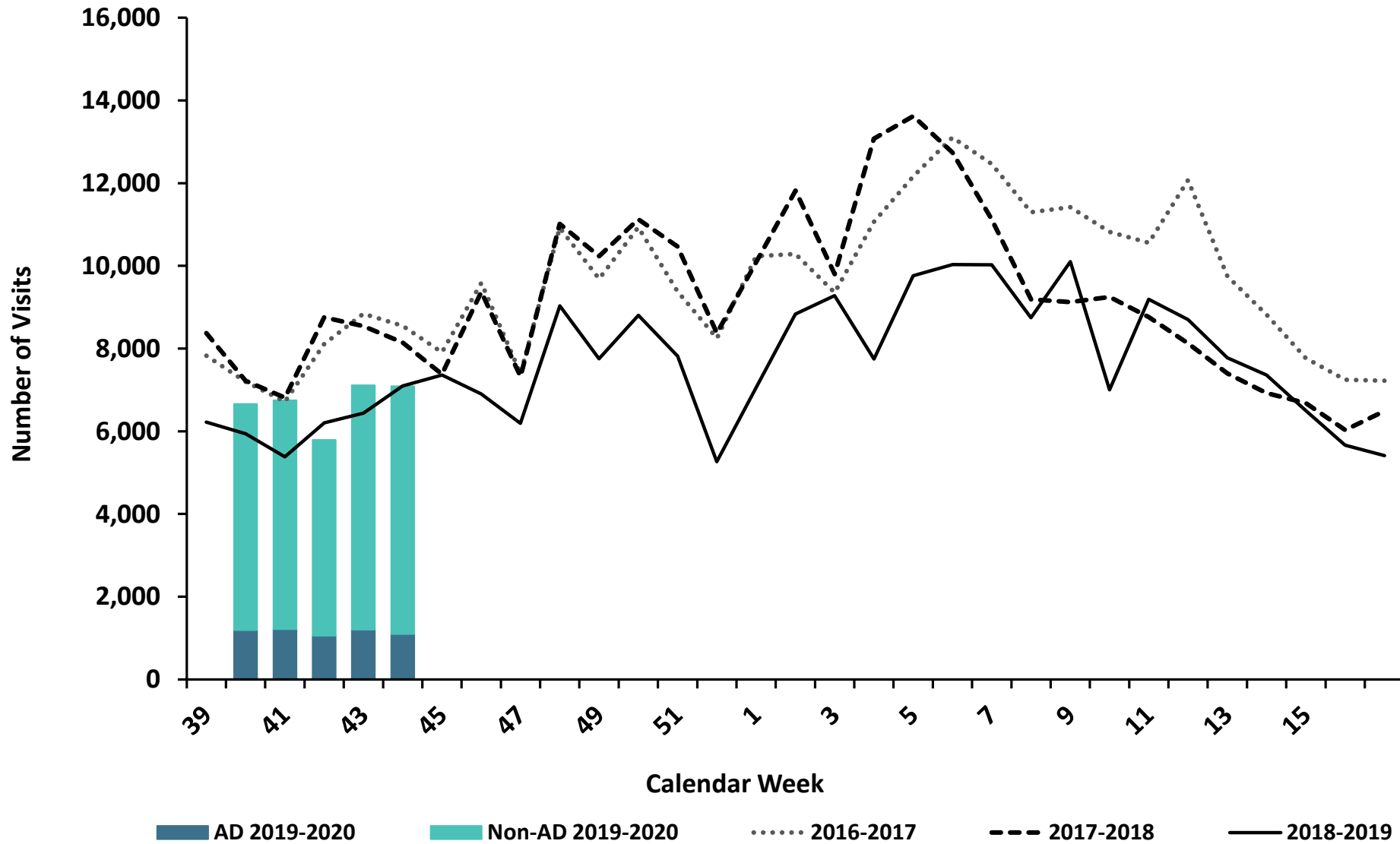
Percentage of Visits for Influenza-like Illness (ILI) Reported by the U.S. Outpatient Influenza-like Illness Surveillance Network (ILINet), Weekly National Summary, 2019-2020 and Selected Previous Seasons



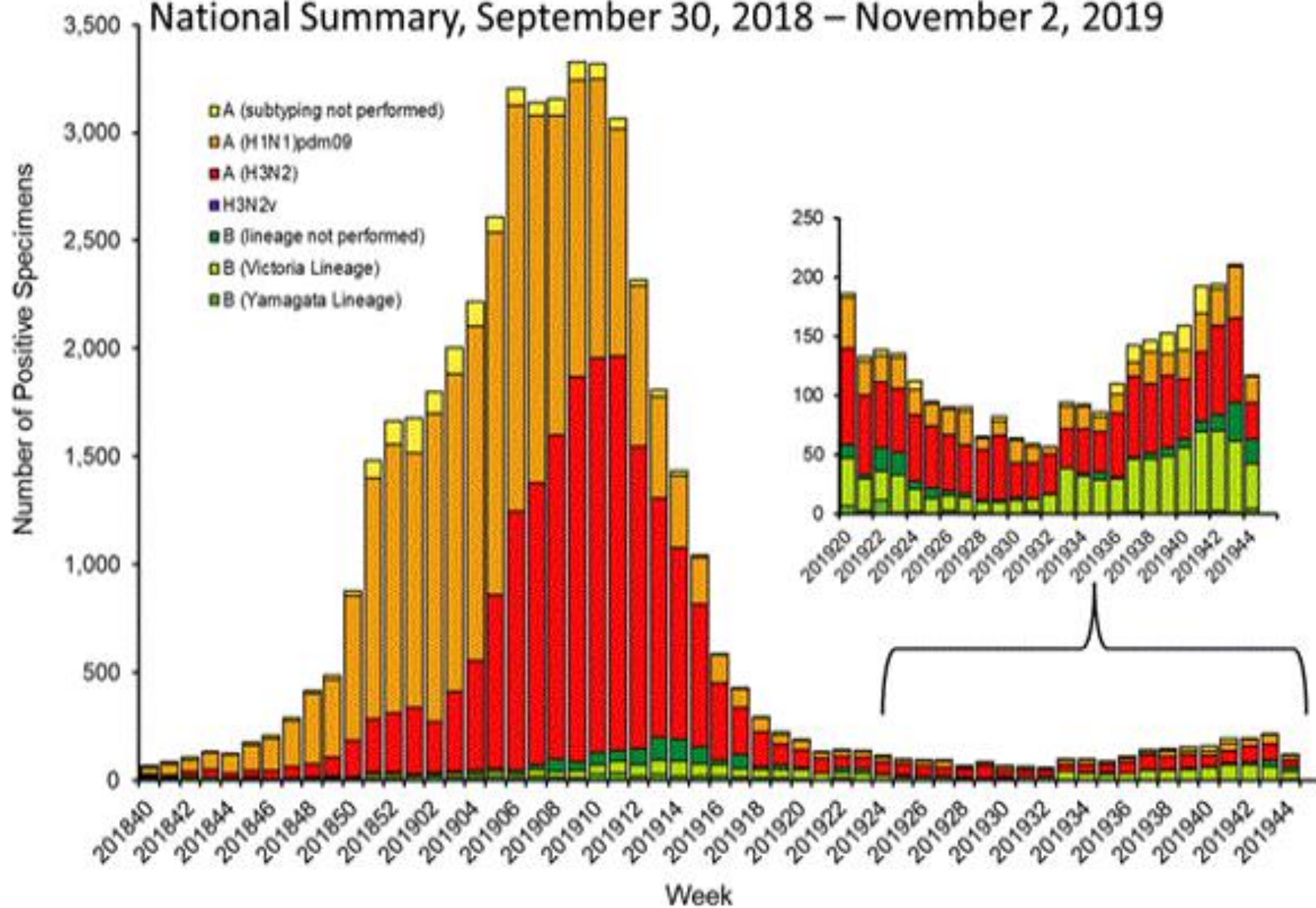


# ESSENCE Weekly Outpatient Clinic Visits for Influenza-like Illness

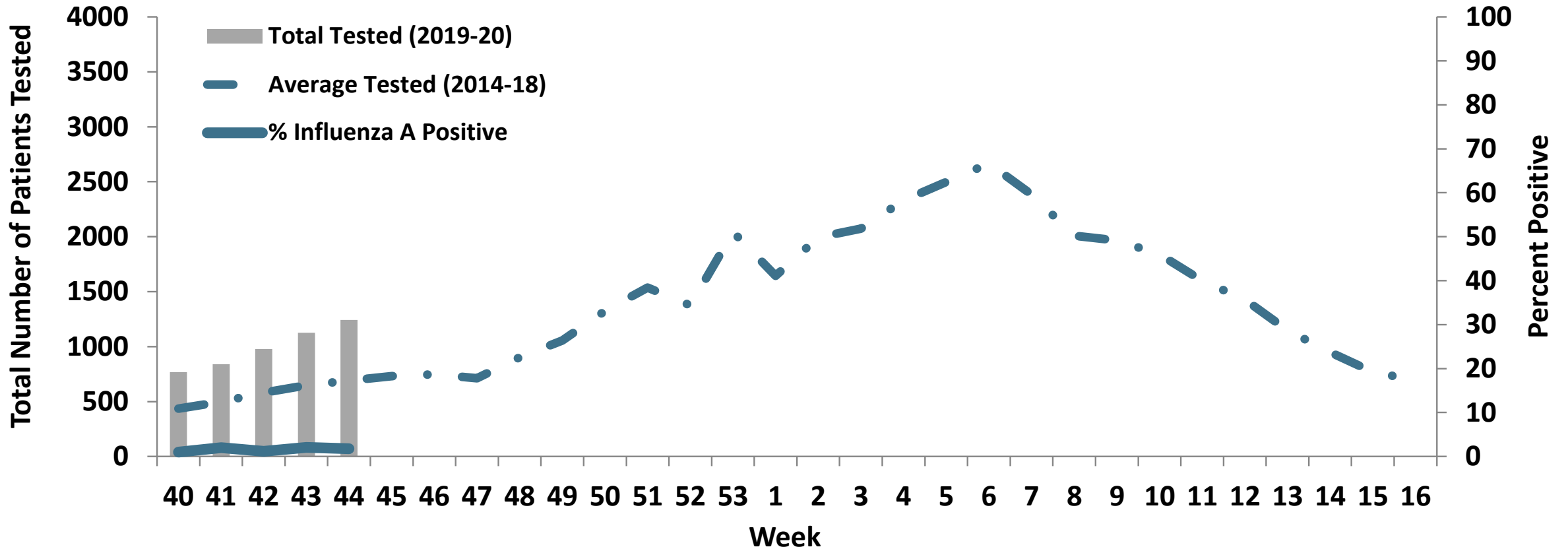
Army MTFs, All Services, 2016-2019



# Influenza Positive Tests Reported to CDC by U.S. Public Health Laboratories, National Summary, September 30, 2018 – November 2, 2019



### Proportion of Positive Influenza A Specimens for U.S. Army 2019-2020



		<b>Week 41</b>	<b>Week 42</b>	<b>Week 43</b>	<b>Week 44</b>	<b>Season Total</b>
<b>Test Types Among Positive Influenza A Specimens</b>	<b>RAT</b>	15	8	16	16	<b>61</b>
	<b>Culture</b>	0	2	3	0	<b>6</b>
	<b>PCR</b>	2	2	5	6	<b>16</b>
<b>Army MTF Laboratory Results, 2019-20</b>	<b>Influenza A</b>	17	12	24	22	<b>83</b>
	<b>Influenza B</b>	15	22	19	112	<b>172</b>
	<b>Adenovirus</b>	2	9	7	3	<b>31</b>
	<b>Enterovirus</b>	3	1	0	0	<b>4</b>
	<b>Parainfluenza</b>	8	18	13	1	<b>51</b>
	<b>RSV</b>	24	33	34	36	<b>133</b>
	<b>Negative</b>	1789	2330	2398	2592	<b>10890</b>
	<b>Total</b>	<b>1858</b>	<b>2425</b>	<b>2495</b>	<b>2766</b>	<b>11364</b>

